

1 Draw a line to match each of the four numbers to the nearest hundred.

531

617

253

484

700

200

300

400

500

600

2 marks

2 Circle the number **nearest to 1000**



1060

1049

1100

960

899

1 mark

3

Draw arrows.

rounded to the nearest 100 is



1070

3770

8200

8225

3600

1100

3680

8300

1000

1 mark

4

Complete this table to show the numbers rounded to the nearest 100.

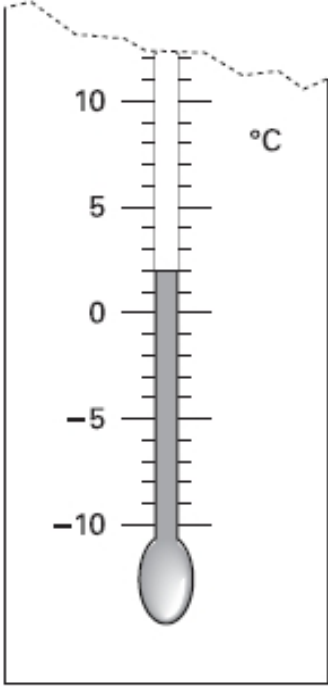
One has been done for you.

	rounded to the nearest hundred
316	300
3162	
31628	
316281	

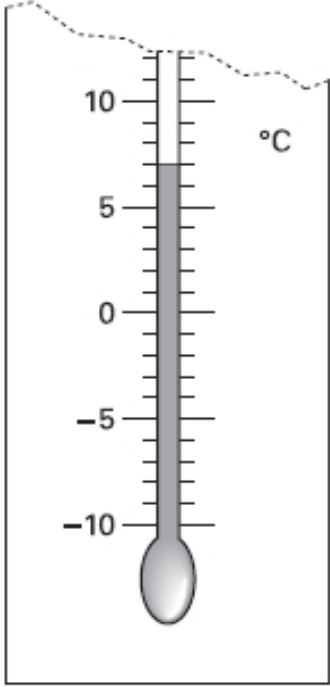
2 marks

5

These are the temperatures in York and Rome on a day in winter.



York



Rome

How many degrees **colder** is it in York than in **Rome**?

 °C

1 mark

On another day, the temperature in York is **4°C**

Rome is **7 degrees colder** than York.

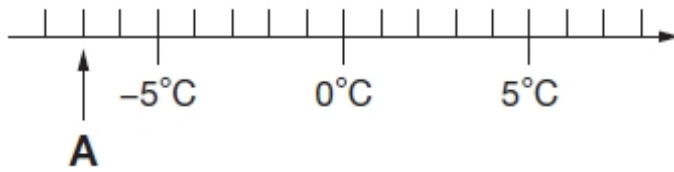
What is the temperature in **Rome**?

 °C

1 mark

6

Here is part of a temperature scale.



What is the temperature shown at **A**?

 °C

1 mark

What temperature is 20 degrees **higher** than **A**?

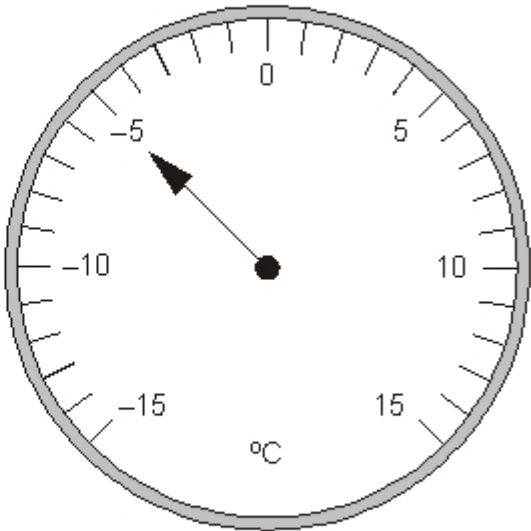
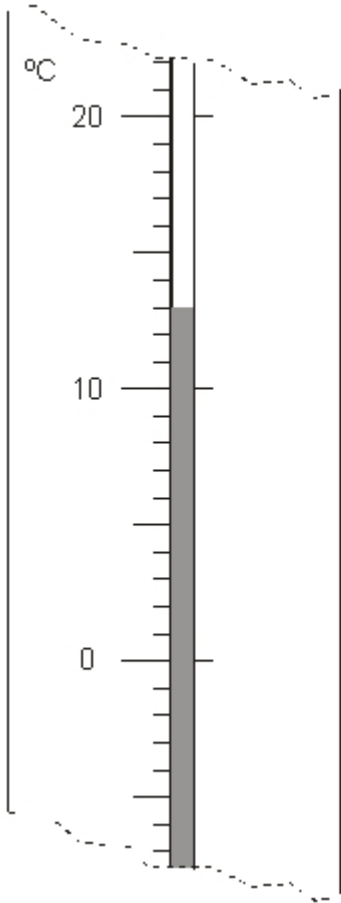
 °C

1 mark

7

Here are two thermometers.

They show two different temperatures.



What is the **difference** between the two temperatures?

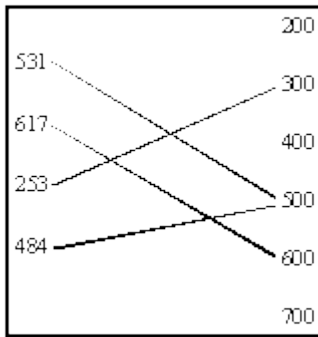
degrees

1 mark

Mark schemes

1

All 4 lines drawn matching these pairs of numbers.



All 4 lines must be correctly matched for the 2 marks to be awarded.

If extra lines are drawn, award no marks unless the child clearly indicates his or her intentions.

2

Any 3 of the 4 lines correct, ie only 1 error.

or 1

Write 1 or 2 for score for question 20.

[2]

2

1060 1049 1100 **960** 899

Accept alternative indications, eg the number crossed or underlined.

[1]

3

1070 → 1100
8225 → 8200
3680 → 3700

All correct for 1 mark.

[1]

4

Award **TWO** marks for three numbers correct as shown:

	rounded to the nearest hundred
316	300
3162	3200
31628	31600
316281	316300

If the answer is incorrect, award **ONE** mark for two numbers correct.

Up to 2

[2]

5

(a) 5

1

(b) - 3 **OR** minus 3

*Accept '3 degrees below zero' or similar **OR** -3' written on either thermometer.*

***Do not** accept '3-' **OR** a mark on the thermometers such as a cross, unless the numerical answer is written.*

1

[2]

6

(a) -7°C

***Do not** accept 7-*

1

(b) 13°C

*If (a) is negative allow follow through in part (b) for **ONE** mark.*

1

[2]

7

18

Accept -18

[1]