

**1** Round the following numbers.



**540** to the nearest 100


**236** to the nearest 10

$1\frac{3}{4}$  to the nearest whole number

2 marks

**2** Complete this table to show the numbers rounded to the **nearest 100**.

One has been done for you.



	rounded to the nearest hundred
316	300
3162	
31628	
316281	

2 marks

**3** Write the number that is nearest to **5000** which uses all the digits **4, 5, 6** and **7**.



--	--	--	--

1 mark

4

Draw arrows.

rounded to the nearest **100** is



1070

3770

8200

8225

3600

1100

3680

8300

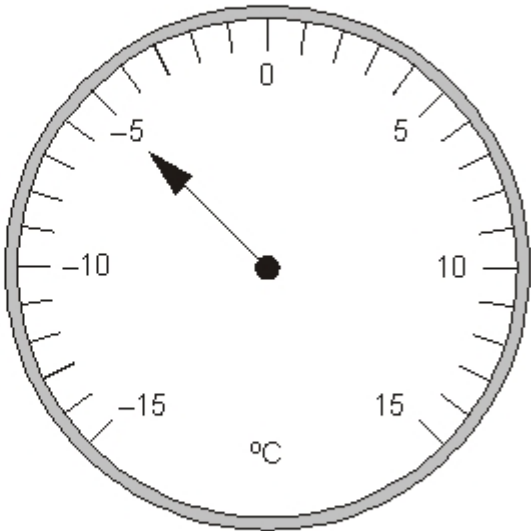
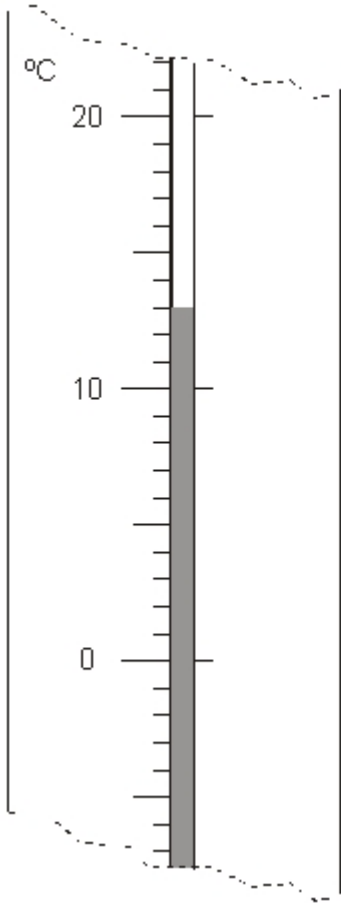
1000

1 mark

5

Here are two thermometers.

They show two different temperatures.

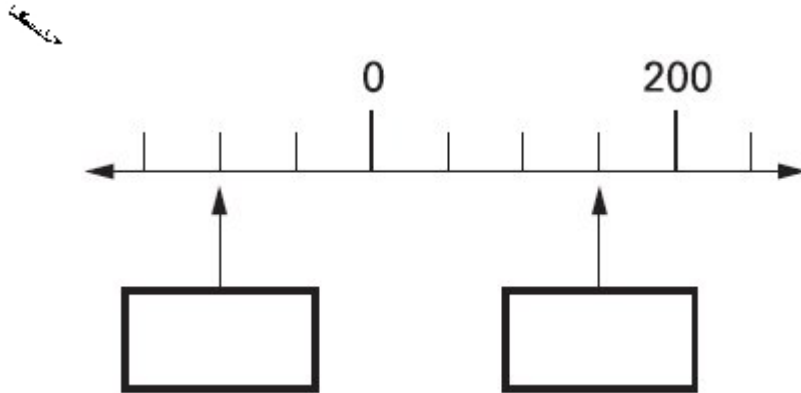


What is the **difference** between the two temperatures?

degrees

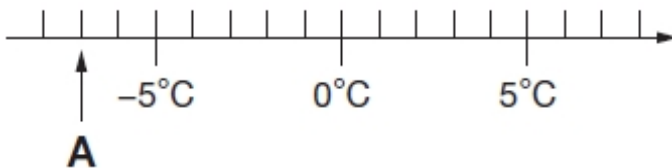
1 mark

- 6 Here is part of a number line.  
Write the missing numbers in the boxes.



2 marks

- 7 Here is part of a temperature scale.



What is the temperature shown at **A**?

  °C

1 mark

What temperature is 20 degrees **higher** than **A**?

  °C

1 mark

8



The temperature **inside** an aeroplane is **20 °C**.

The temperature **outside** the aeroplane is **-30 °C**.

What is the **difference** between these temperatures?

→

degrees

1 mark

## Mark schemes

1

Award **TWO** marks for three numbers correct as shown:

500

240

2

If the answer is incorrect, award **ONE** mark for any two numbers correct.

Up to 2

[2]

2

Award **TWO** marks for three numbers correct as shown:

	rounded to the nearest hundred
316	300
3162	3200
31628	31600
316281	316300

If the answer is incorrect, award **ONE** mark for two numbers correct.

Up to 2

[2]

3

4 7 6 5

[1]

4

1070 → 1100  
8225 → 8200  
3680 → 3700

*All correct for 1 mark.*

[1]

5

18

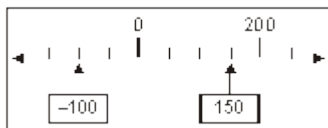
*Accept -18*

[1]

**6** (a)  $-100$  written in the left-hand box.  
*Do not accept 100-*

1

(b) 150 written in the right-hand box.



1

[2]

**7** (a)  $-7^{\circ}\text{C}$   
*Do not accept 7-*

1

(b)  $13^{\circ}\text{C}$

*If (a) is negative allow follow through in part (b) for **ONE** mark.*

1

[2]

**8** 50  
*Accept  $-50$*

[1]